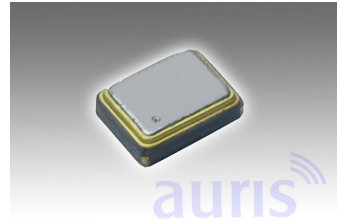


Features

- Small size 2,5x2mm
- Temperature-compensated
- High accuracy



ATCQO2520

Specification

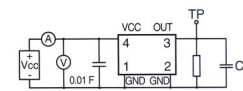
Type	ATCQO2520 Clipped Sine Wave	
Frequency Range	8,00MHz ~ 52,00MHz	
Frequency Tol. (25°C±3°C)	±0,5ppm, ±1,0ppm, ±1,5ppm ±2,0ppm, ±2,5ppm	Frequency Stability
Power Supply (Vdd)	1,8V; 2,5V; 3,0V; 3,3V	vs. operating Temp. (ppm): ±0,5; ±1,0; ±1,5; ±2,0; ±2,5
Supply Current (Idd)	8,00MHz ~ 52,00MHz = 2,5mA max.	vs. Voltage Change (±5%) (ppm): ±0,3
Operating Temperature Range	0°C ~ +70°C ~ -40°C ~ +85°C	vs Load Change (±5%) (ppm): ±0,3
Output Load	10k ohms // 10pF	vs Aging (first Year): (ppm): ±1,0
Output Voltage	0,8Vp-p min.	
Start Up Time	10ms max. <5ms typical	
Storage Temperature	-40°C - +85°C	
RoHS	compliant	
Contents Of Reel	3000 pcs	

Drawing (mm)

Please contact auris-sales for further information.

Test Circuit/Waveform

SINE TEST CIRCUIT

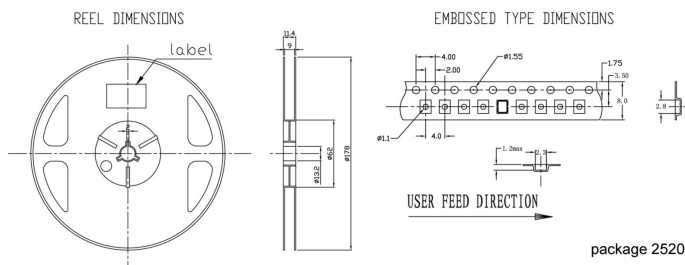


CL=10pF (including fixture and probe capacitances)
RL=10kOhm

TYPICAL CLIPPED SINE WAVE FORM

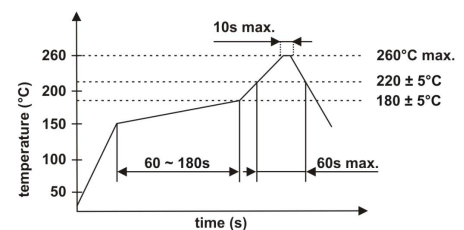


Tape dimension (mm)



package 2520

Soldering profile



Order code

O	- 24.000000M	- ATCQO 2520	- 1,5	- 2,5	- 3.3	- E	- TR
Part	Frequency	Type/Package	Tolerance 25°C	Tolerance	Voltage	Temperature	Option
O=Oscillator	M=MHz	ATCQO= Temperature controlled QO 2520=2,5x2,0mm	±ppm	±ppm	3,3=3,3Volt 3,0=3,0Volt 2,8=2,8Volt 2,5=2,5Volt 2,0=2,0Volt 1,8=1,8Volt	A= 0°C ~ +70°C B= -10°C ~ +60°C C= -10°C ~ +70°C D= -20°C ~ +70°C E= -40°C ~ +85°C	TR=Tape and reeled X=Special options

Please mention the output signal clipped sine wave when ordering.